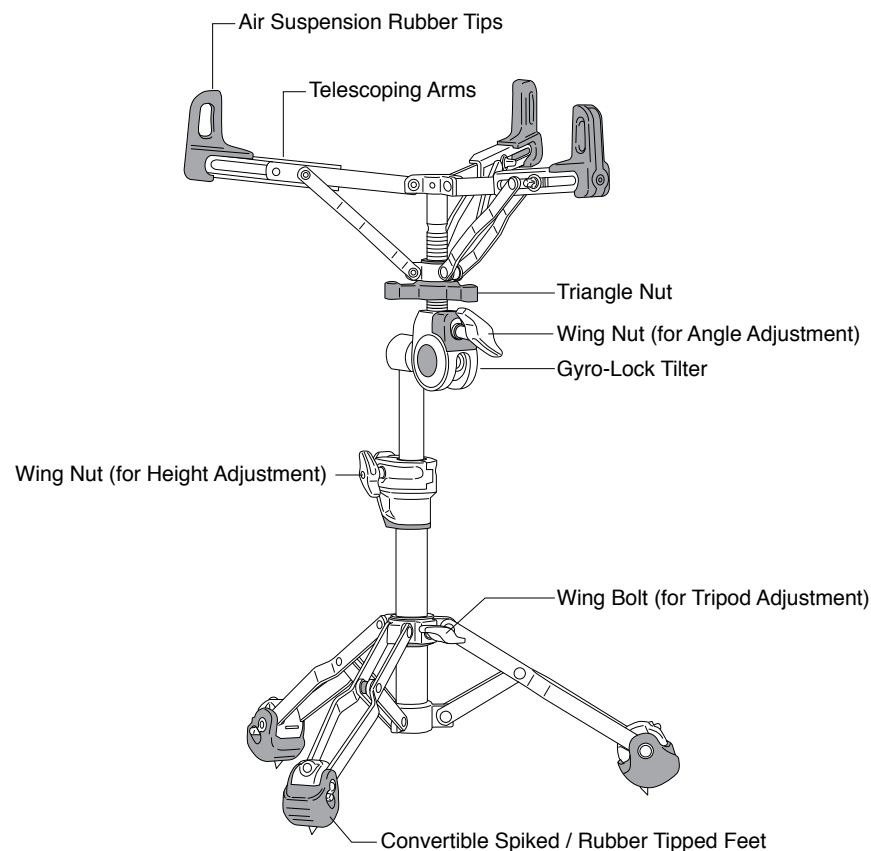


PEARL HI-HAT STAND

S-2000

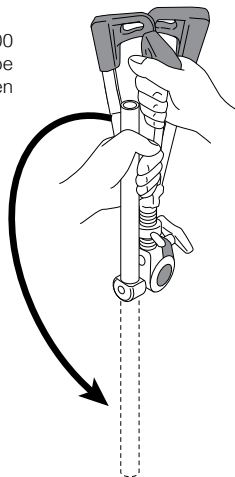
Instruction Manual

Congratulations on your purchase!
To get optimum performance from your S-2000 "Fit-All" Snare Stand, please read this Instruction Manual before playing.



Unpacking

After unpacking your S-2000 Snare Drum Stand turn the tube of the top section as shown then proceed to the assembly step.

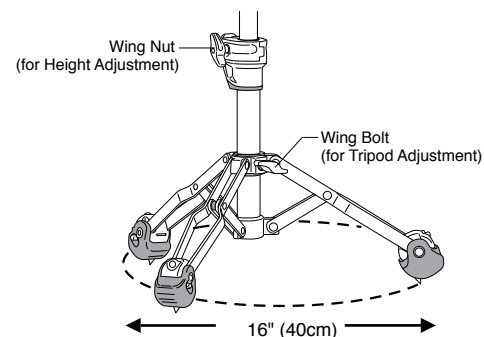


Caution

When handling tubular hardware do not put your fingers into the tubes to prevent injury to your fingers.

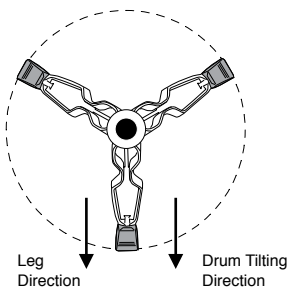
Assembly

Assemble the S-2000 "Fit-All" Snare Stand as shown below.



Caution

For optimal stability, the base of the S-2000 should be opened to at least 16" (40cm) regardless of the size of the drum mounted to the stand.



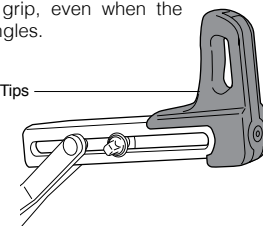
Caution

For optimal stability, one leg should be placed in the same direction as the tilt of the drum.

Air Suspension Rubber Tips

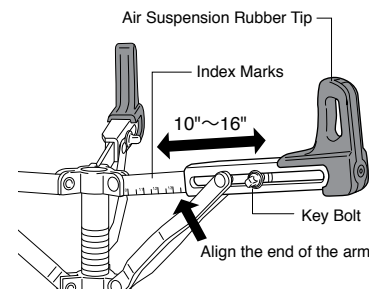
The S-2000's Air Suspension Rubber Tips gently cushion the drum to allow maximum resonance while providing excellent grip, even when the drum is tilted at extreme angles.

Air Suspension Rubber Tips



Telescoping Arms

The S-2000's telescoping arms accommodate drums from 10" to 16" in diameter. Index Marks are provided to adjust the arms to the proper length quickly and easily. To fit a 14" diameter drum, for example, loosen the Key Bolts and align the end of each arm with the Index Mark labeled "14" as shown. Re-tighten the Key Bolts to retain this setting.

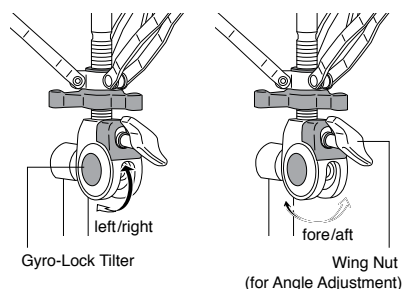


Caution

After adjusting the arms tighten the key bolts securely. Failure to do so may cause the drum to fall from the stand.

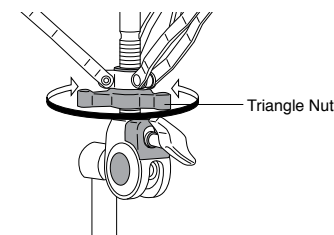
Gyro-Lock Tilter

The S-2000 tilter is infinitely adjustable and allows the drum to be tilted fore/aft and left/right at the same time for precise placement.



Triangle Nut

Tighten the Triangle Nut to grip the drum. Do not overtighten.

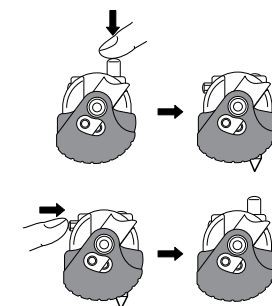


Caution

- ◆ When adjusting the height and tilt of the drum, support the drum with one hand while slowly making adjustments with your free hand to prevent the stand from falling and pinching fingers that may be in the way.
- ◆ When folding the tripod legs, be careful not to pinch your fingers between the legs and the stand.
- ◆ When handling tubular hardware, do not put your fingers into the tubes to prevent injury to your fingers.

Convertible Spiked / Rubber Tipped Feet

For maximum slip prevention, the S-2000 is equipped with a push button activated Spike Tip. To activate the Spike Tip, push the button as shown in Fig. 1. To retract the Spike Tip, push the button as shown in Fig. 2.



Caution

The Spikes are sharp and can cause serious personal or property injury. To prevent mishaps, use extreme care when handling the snare stand especially when the Spike Tips are exposed. A rug or carpet should be used to protect floor surfaces whenever the Spikes are used.

Pearl®

<http://www.pearldrums.com>
Products and specifications are subject to change without notice.
Printed in Taiwan.
-0701-